

Polaroid

636 Close-up



Polaroid service centres and offices

If you need information or help, or if your camera needs repair, please see your dealer or contact the nearest Polaroid office.

Polaroid Service-Zentren und Büros

Wenn Sie Informationen oder Hilfe benötigen oder Ihre Kamera repariert werden muss, wenden Sie sich an Ihren Fotohändler oder an die nächste Polaroid Niederlassung.

Ateliers et centres Polaroid

Si vous désirez davantage de conseils et si vous pensez que votre appareil nécessite une révision, prenez contact avec votre revendeur ou avec le centre Polaroid le plus proche.

Servizio Assistenza Clienti

Se si necessita di informazioni o di far riparare l'apparecchio, si prega di rivolgersi al proprio fotonegoziante di fiducia o a Polaroid Servizio Assistenza Clienti.

Deutschland

Polaroid GmbH
Sprendlinger Landstrasse 109
63069 Offenbach 1
Tel.: 069 8404 444

France

Polaroid (France) S.A.
4, rue J.P. Timbaud
B.P. 47
78391 Bois d'Arcy Cedex
Tel.: (1) 30 85 61 66

Great Britain

Polaroid (U.K.) Ltd.
Ashley Road
St. Albans
Hertfordshire AL 1 5PR
Tel.: St. Albans (0727) 59191
Freefone 0800 010119

Italia

Polaroid (Italia) S.p.A.
Via Piave 11
21051-Arcisate (Varese)
Tel.: (0332) 47 00 31
Linea Verde 167-820050

Österreich

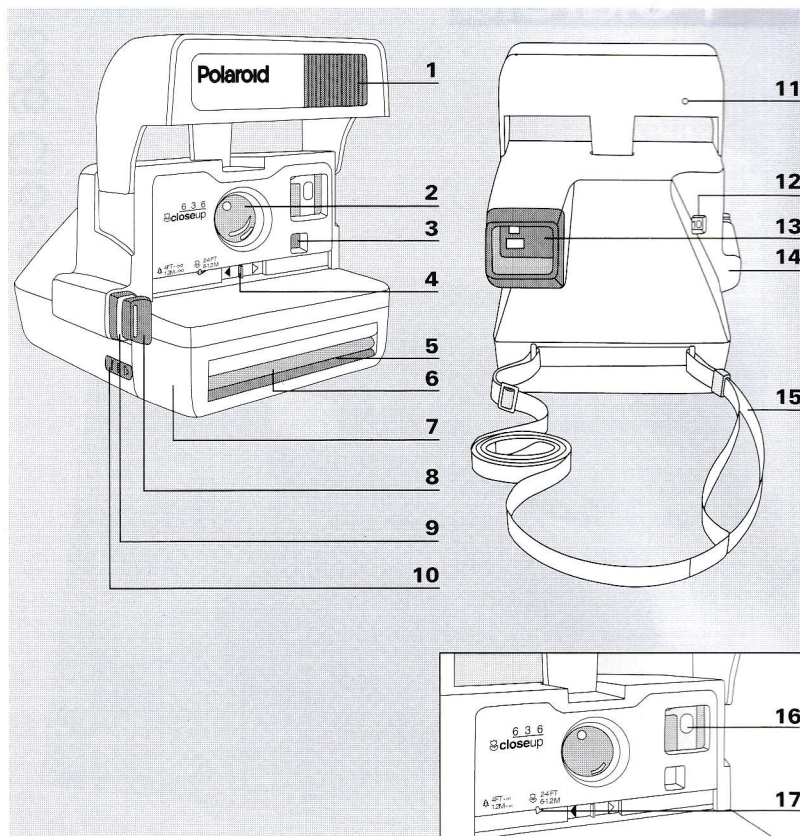
Polaroid Ges.m.b.H.
Postfach 66
Eitnergasse 5A
1233 Wien
Tel.: (0222) 86 86 27

Schweiz/Suisse/Svizzera

Polaroid A.G.
Hardturmstrasse 133
8037 Zürich
Tel.: (01) 277 72 72

U.S.A.

Polaroid Corporation
784 Memorial Drive
Cambridge, MA 02139
Tel.: Toll free 800-343-5000



English

The Camera

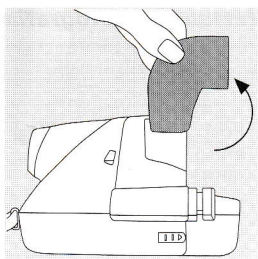
- 1 Electronic flash
- 2 Lens
- 3 Photocell
- 4 Lighten/darken control
- 5 Picture exit slot
- 6 Film shade (protects the picture from light as it exits the camera)
- 7 Film door
- 8 Shutter button
- 9 Non-flash button
- 10 Film door latch
- 11 Green light (indicates the flash is ready to fire)
- 12 Picture counter (indicates how many pictures remain)
- 13 Viewfinder
- 14 Thumb rest
- 15 Neckstrap
- 16 Oval frame (indicates Close-up lens is in use)
- 17 Close-up lever

Deutsch

Die Kamera

- 1 Elektronenblitz
- 2 Objektiv
- 3 Fotozelle
- 4 Hell-/Dunkel-Einstellung
- 5 Bild-Austritt
- 6 Filmschutzfolie (zum Schutz des Bildes vor Licht, beim Auswurf aus der Kamera)
- 7 Filmladeklappe
- 8 Auslösetaste
- 9 Auslösetaste ohne Blitz
- 10 Entriegelung für Filmladeklappe
- 11 Grünes Licht (Blitz ist bereit)
- 12 Bildzählwerk (zeigt an, wieviele Bilder noch auf dem Film sind)
- 13 Sucher
- 14 Daumenstütze
- 15 Tragegurt
- 16 Ovaler Rahmen (zeigt vorgeschaltete Nahlinse an)
- 17 Nahlinse

English



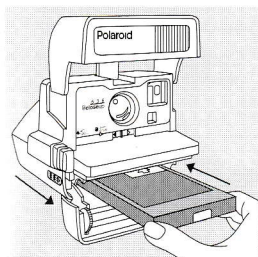
1

Raise the electronic flash (1)

Grip the sides of the flash unit. Swing the flash unit up to snap it in place. The flash will fully charge automatically, in about 3 seconds, every time you raise the flash unit when there is film in the camera, or when you take a picture or touch the shutter button.

The flash is designed to be used for *every* picture — outdoors and indoors. This will provide you with the best instant pictures under most lighting conditions.

When you are not using the camera, lower the flash unit. It will protect the lens and lock the shutter button.



2

Load the film (2)

Use only Polaroid 600 PLUS colour film.

Each film pack provides ten colour pictures and contains a high-energy battery that powers both the camera and the electronic flash.

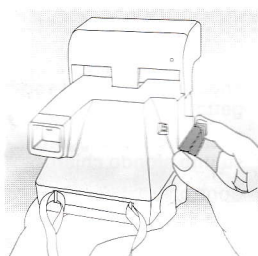
A film expiration date appears on the bottom of every film box. This date is your assurance that you are buying fresh film.

To load the film

Push the latch *forward* to open the film door. Hold the film pack by its edges only, as shown, and slide it all the way into the camera. Close the film door. As soon as it is closed, the camera will eject the film cover. The green light on the back of the camera will come on to show the flash is ready to fire.

To remove an empty film pack

Push the latch *forward* to open the film door. Pull the coloured tab on the film pack and remove the film from the camera.



3a

Take the picture (3)

Hold the camera

Grip the camera in the palm of your left hand (a). Or, if it is more comfortable, place the fingers of your left hand over the top of the viewfinder and your thumb under the camera (b).

Place your right thumb on the thumb rest, your index finger on the shutter button, and curl your other fingers into your palm.

Be sure to keep your fingers away from the picture exit slot.

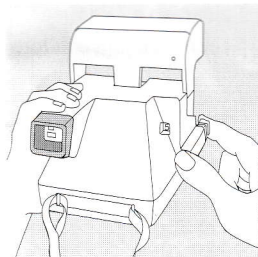
Position your subject

For best results *indoors*, your subject should be from 1.2 to 3m (4 to 10 ft.) away and in front of a light-coloured background.

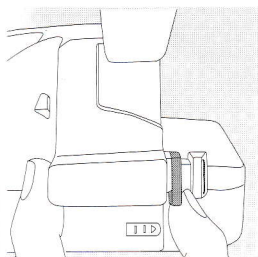
Outdoors, your subject should be at least 1.2m (4 ft.) away. For best results, always use flash. Keep the sun behind you or at your side. Avoid having the sun directly overhead. Also, make sure there is nothing between your camera and subject.

Press the shutter button

Frame your subject in the viewfinder and press the shutter button. When you release the button, the camera will eject the picture and the flash will immediately recharge.



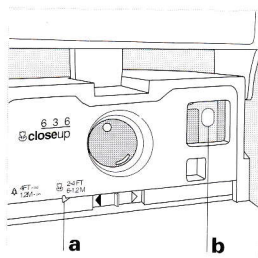
3b



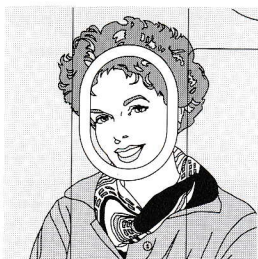
4

Taking pictures through glass (4)

Photographing a daylight scene through glass is a special situation which requires that you stop the electronic flash from firing to avoid a flash reflection. Take the picture by pressing only the non-flash button as shown.



5a,b



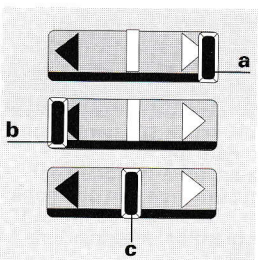
5c

The Close-up lens (5)

To use, slide the lever (a) to the 0.6–1.2m (2–4 ft.) setting. The oval frame (b), which is now visible in the viewfinder, serves as a reminder that the close-up lens is in place. When your subject's head fills the frame, you are at the correct distance for a close-up (c).

For close-ups of small children, objects, or more than one person, keep the oval frame in place and centre it on one subject. Use the full viewfinder area — not the oval frame — to frame the picture.

When you have finished using the close-up lens, return the lever to the 1.2m to ∞ (4 ft. to ∞) setting. Lowering the flash unit will also slide the lever back automatically.



6a,b,c

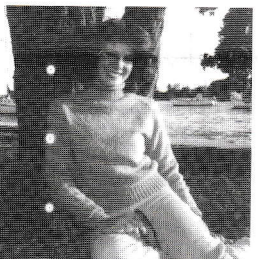
The lighten/darken control (6)

Use this control only when you want to reshoot a picture to make it lighter or darker.

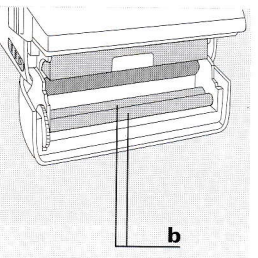
To take a lighter picture, slide the control past the white arrow (a).

To take a darker picture, slide the control past the black arrow (b).

A white double arrow appears in the bottom of the viewfinder as a reminder that the control is not in the centre position. Return the control to the centre position when you have finished reshooting (c).



7a



7b

Trouble-free picture taking

Keep the developer rollers clean (7)

Dirty rollers can cause a repeated spot or bar pattern in the picture (a). The developer rollers (b) are located inside the film door. If there is film in the camera, open the door in dim light. Clean the rollers with a damp, lint-free cloth.

If the camera does not eject the picture

Check the picture counter. When the film pack is empty, the flash will charge but you cannot take a picture.

The flash is ready to fire when the green light on the back of the camera is on.

Handling

Hold the developing picture by its wide white border. While it is developing, keep the picture out of direct sunlight.

Temperature

When the temperature is below 13°C (55°F), keep the camera and film warm. Immediately place the developing picture in a warm pocket for at least a minute being careful not to bend it. See the film box for further temperature information.

Lens

It is important to avoid touching the lens. To remove dust or fingerprints, breathe on the lens and wipe it gently with a clean, soft facial tissue. Do not use silicone-treated eyeglass tissues.

Picture tips

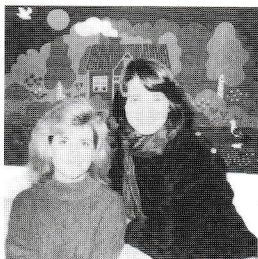
- For best results, always use flash.
- Always aim the camera at your main subject.
- Keep the sun behind you or at your side; avoid having the sun directly overhead.

Warranty

If this camera proves to be defective within one year from the original date of purchase, we will repair it or, at our option, replace it free of charge with a camera of the same or equivalent model. We will make no charges for labour, service or parts. This warranty does not cover damages caused by accident, misuse or tampering with the camera. Repairs to correct such damage will be made at a reasonable charge. To take advantage of this warranty, the camera must be returned to and repaired by one of the Polaroid Service Centres. The above warranty and provisions do not affect your statutory rights.

Specifications subject to change without notice.

Troubleshooting guide



Pictures too light

Subject too close to camera

Stay within camera's range

Dark background/uneven lighting

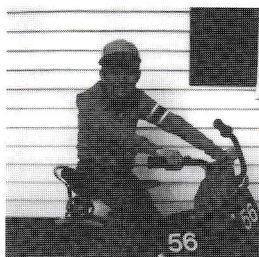
Avoid dark backgrounds; subject and background should be in even lighting

Background too far from subject

Place subject near a brightly coloured background

Wrong lighten/darken control setting

Check lighten/darken control setting



Pictures too dark

Subject too far from camera or beyond flash range

Use flash and stay within camera and flash range; move in close: 1.2m (4 ft.) from subject is best for pictures of people

Bright light or reflective surface behind subject

Avoid bright lights (lamps, windows) and reflective areas behind your subject; eliminate reflections by standing slightly to one side of subject and taking picture at an angle

Background too far from subject

Place subject near a brightly coloured background

Wrong lighten/darken control setting

Check lighten/darken control setting

Camera sees object in front of subject

Make sure there is nothing between your camera and subject

Flash failure

Reshoot



Blurred picture

Flash not used in dim light

Always use flash indoors; use flash outdoors in shade, at dusk or on overcast days

Subject too close to camera

Stay within flash range of camera

Camera or subject motion

Depress shutter button smoothly and keep finger on shutter button until all motor noise stops; keep subject still



Incompletely developed picture

Area containing the developer packets was damaged before film was loaded

Hold film pack by edges and slide all the way into camera; do not remove film from its box until you are ready to load camera